

# Application for Smart Card Management User manual

for Microsoft Windows systems (7 and newer), Mac OS

Warsaw  
2019-04-15

## Content

1. Installation for Windows systems .....	3
2. Installation for MacOS.....	6
3. Registration of the certificate.....	9
4. Change PIN .....	10
5. Unlock PIN .....	11
6. Change SO PIN .....	12
7. Important information .....	13

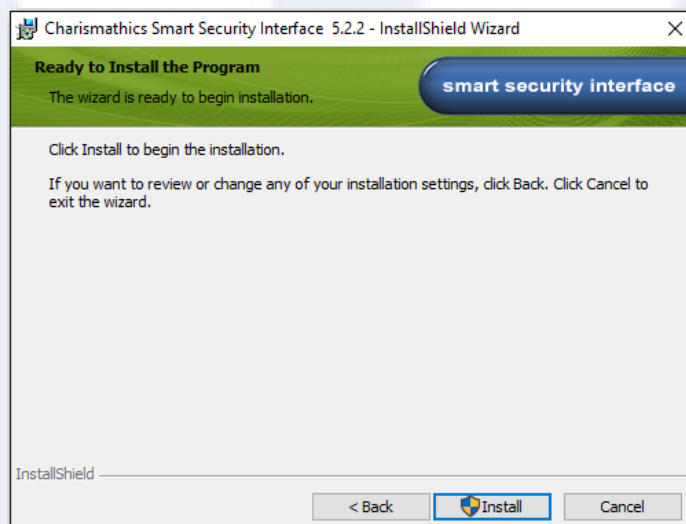
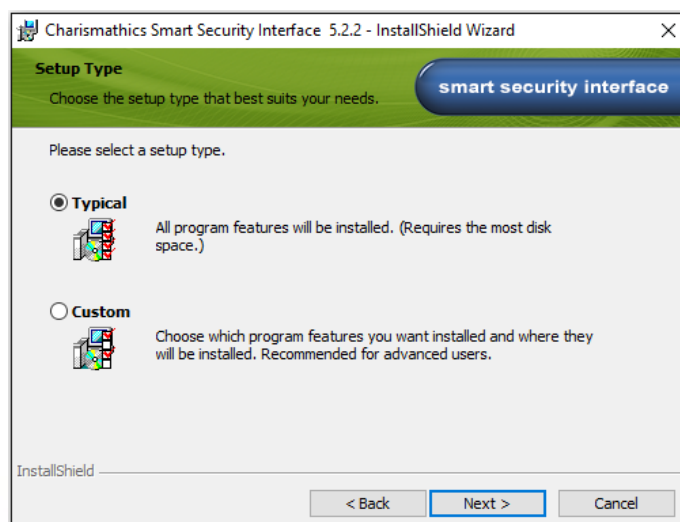
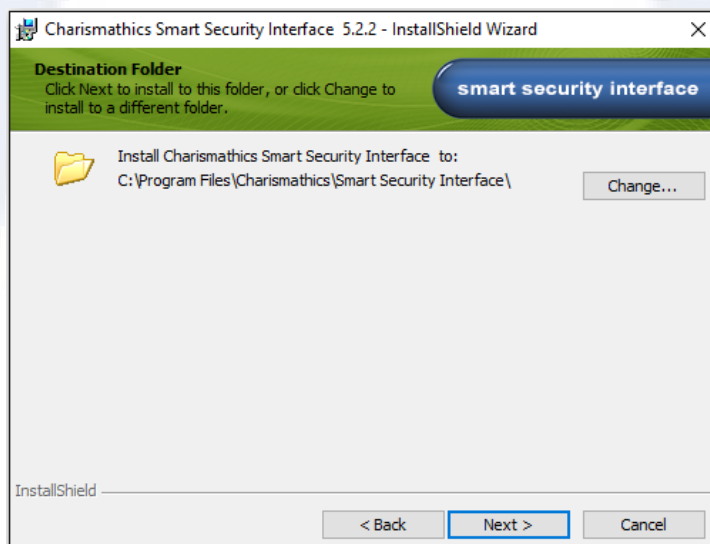
## 1. Installation for Windows systems

In order to initiate the installation, you need an access to a computer with “Administrator”.

Download installation package for Windows 7 and newer: <https://eurocert.pl/index.php/en-us/software>. It contains application for smart card management – “Charismathics Smart Security Interface” and “root certificates”.

To install the application run the downloaded file and follow the screenshots as shown below. The appropriate version for your system is chosen automatically.





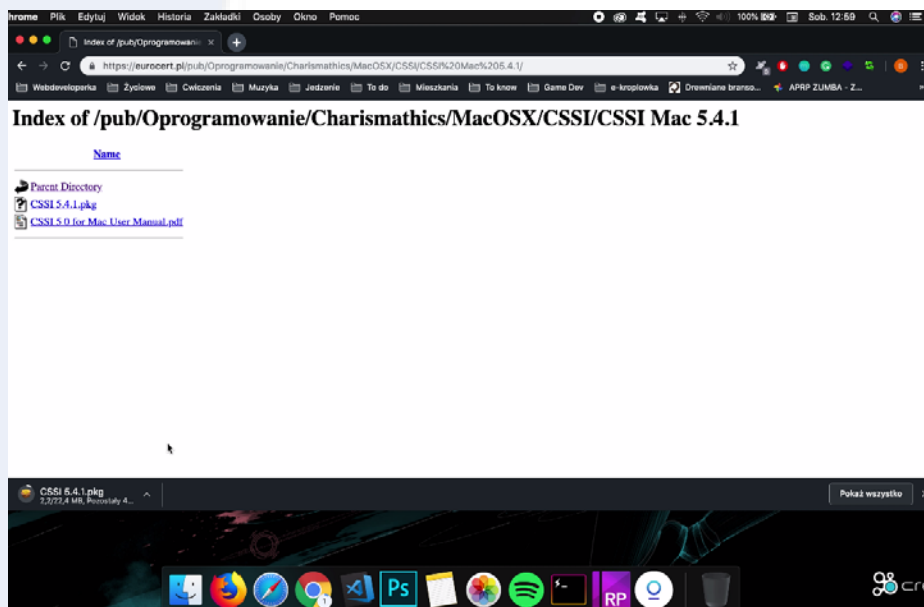


Once the installation is done click "Finish" and restart the computer.

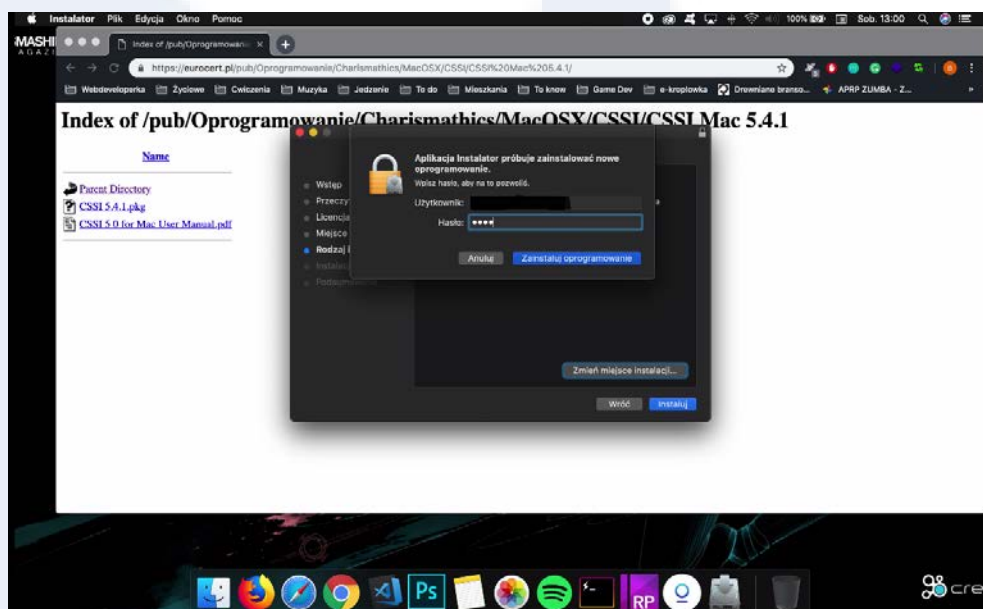
## 2. Installation for MacOS

In order to initiate the installation, you need an access to a computer with “Administrator”.

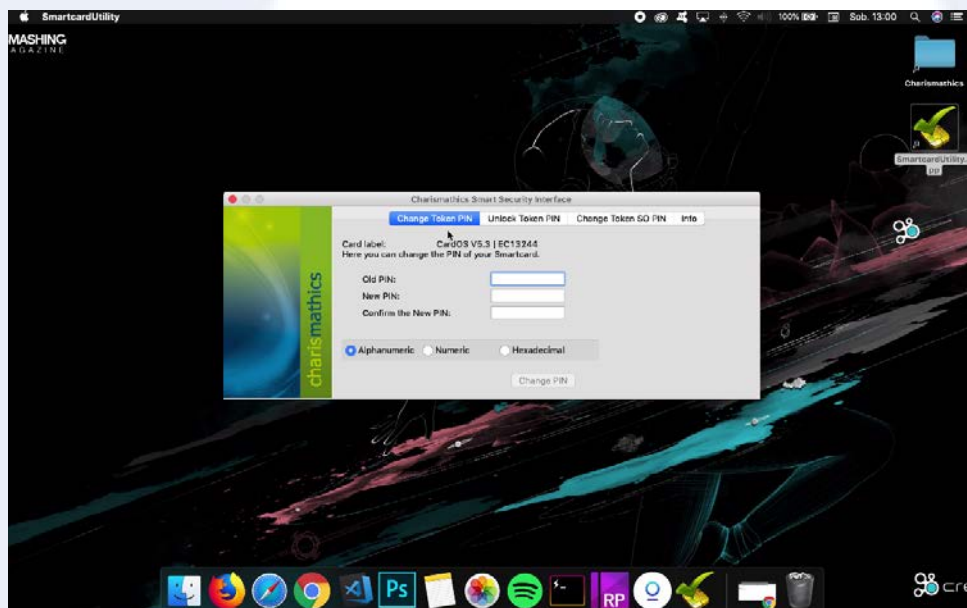
Select the tab “Software” on the website [www.eurocert.pl](http://www.eurocert.pl) (change the language version to English) and click the „download” link for Mac OS installation package, go to the folder **CSSI/CSSI MAC 5.4.1** and download the file **CSSI 5.4.1.pkg**.



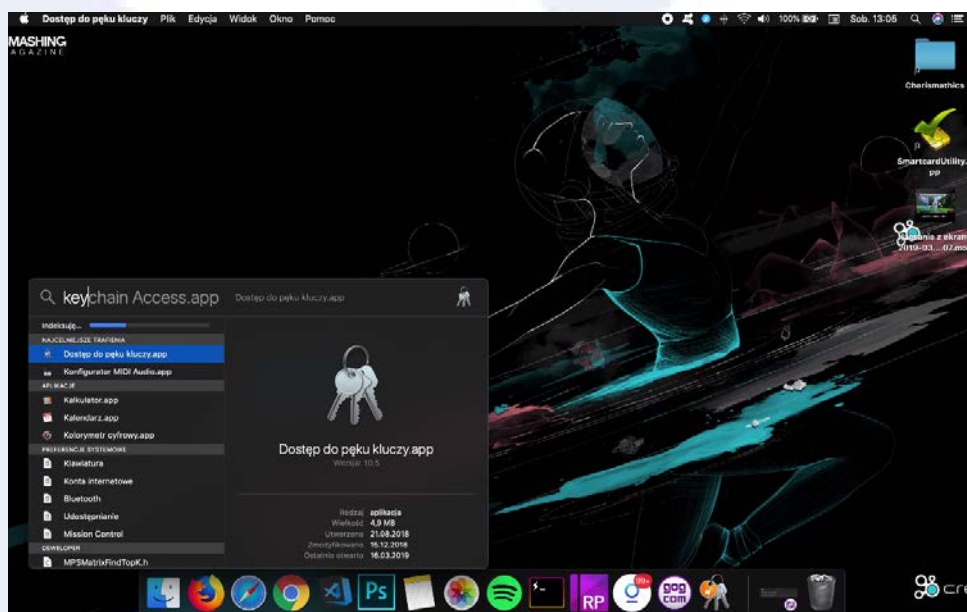
Run the downloaded file and follow the installation assistant.

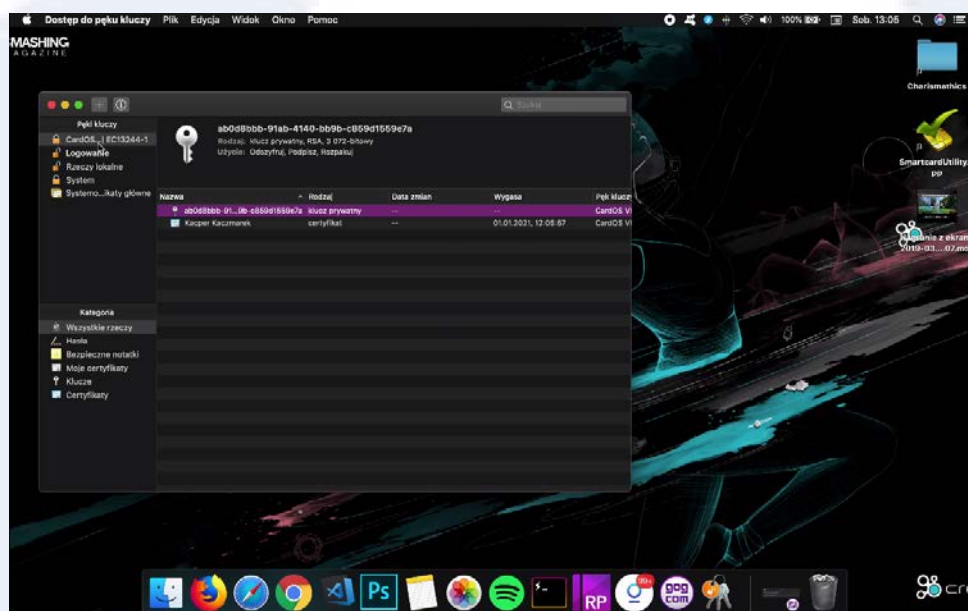


After the installation restart your computer and then run „Smart Card Utility”. “Card label” shows a name of the smart card as shown in the figure below and it should not contain message: “no smart card inserted”.



Go through the Launchpad to the bunch of keys by entering „keychain” and check whether your smart card is shown.





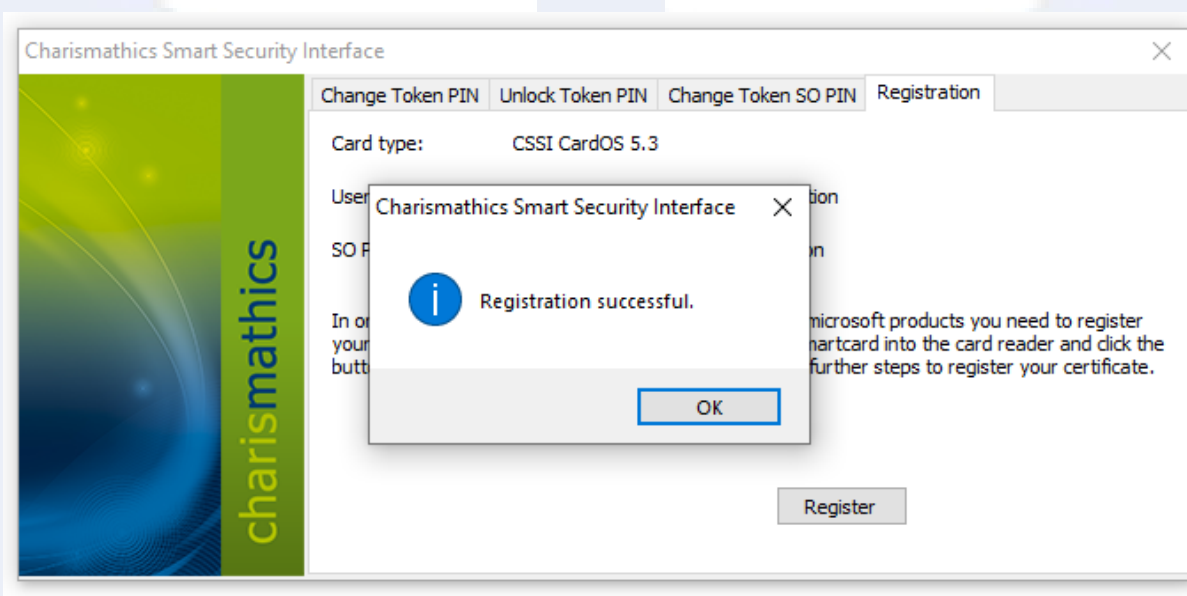
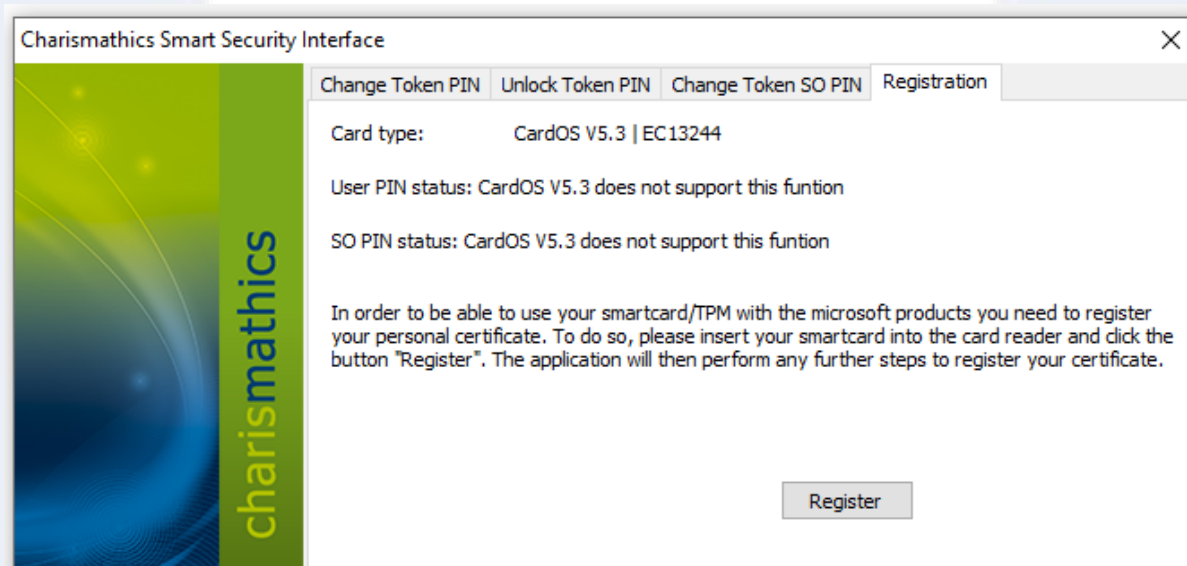


### 3. Registration of the certificate

**Important!** There is no need to carry out this operation on Mac OS, because it is done automatically.

Connect your smart card reader to the computer. Run Charismathics Smart Security Interface and select „Registration”. Click on the button "Register", and you receive a window with the confirmation.

**Important:** The registration need to be done only once for each smart card.



## 4. Change PIN

To change your PIN, select „Change Token PIN”, insert the old PIN followed by the new PIN which must be entered a second time as confirmation.

Click on the button "Change PIN", and you receive a window with the confirmation.

The minimal length of the PIN is four (4) characters and the maximal length is eight or ten characters. The new PIN may consist of any characters (digits, letters, symbols).

### CAUTION!

After three consecutive wrong inputs, the PIN will be locked. To unlock the PIN follow the instructions in the point “Unlock PIN”. Please choose a PIN, which you can remember well, but which cannot be easily guessed. Avoid birthdays or simple sequences of numbers like 1234 or 1111.

Charismathics Smart Security Interface

Change Token PIN | Unlock Token PIN | Change Token SO PIN | Registration

Card label: CardOS V5.3 | EC13244  
Here you can change the PIN of your Smartcard.

Old PIN:

New PIN:

Confirm the New PIN:

Alphanumeric  Numeric  Hexadecimal

Change PIN

Charismathics Smart Security Interface

Change Token PIN | Unlock Token PIN | Change Token SO PIN | Registration

Card label: CardOS V5.3 | EC13244  
Here you can change the PIN of your Smartcard.

Old P

New

Conf

Alphan

Change PIN

Charismathics Smart Security Interface

**i** The PIN was changed.

OK

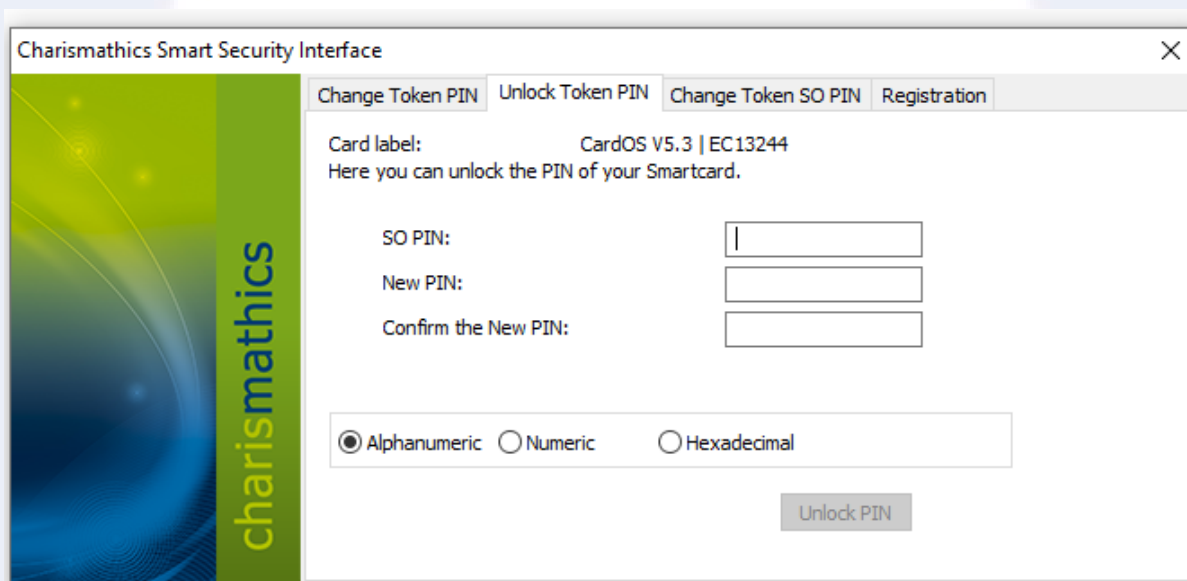
## 5. Unlock PIN

To unlock your PIN, select „Unlock Token PIN”, enter the SO PIN followed by the new PIN, which must be entered a second time as confirmation.

Click on the button "Unlock PIN" and a confirmation window opens.

The minimal length of the PIN is four characters and the maximal length is eight or ten characters. The new PIN may consist of any characters (digits, letters, symbols).

**CAUTION!** After three consecutive wrong inputs, the SO PIN will be locked. This means that the smart card is irreversibly blocked and you should request for a new certificate.



Charismathics Smart Security Interface

Change Token PIN | **Unlock Token PIN** | Change Token SO PIN | Registration

Card label: CardOS V5.3 | EC13244  
Here you can unlock the PIN of your Smartcard.

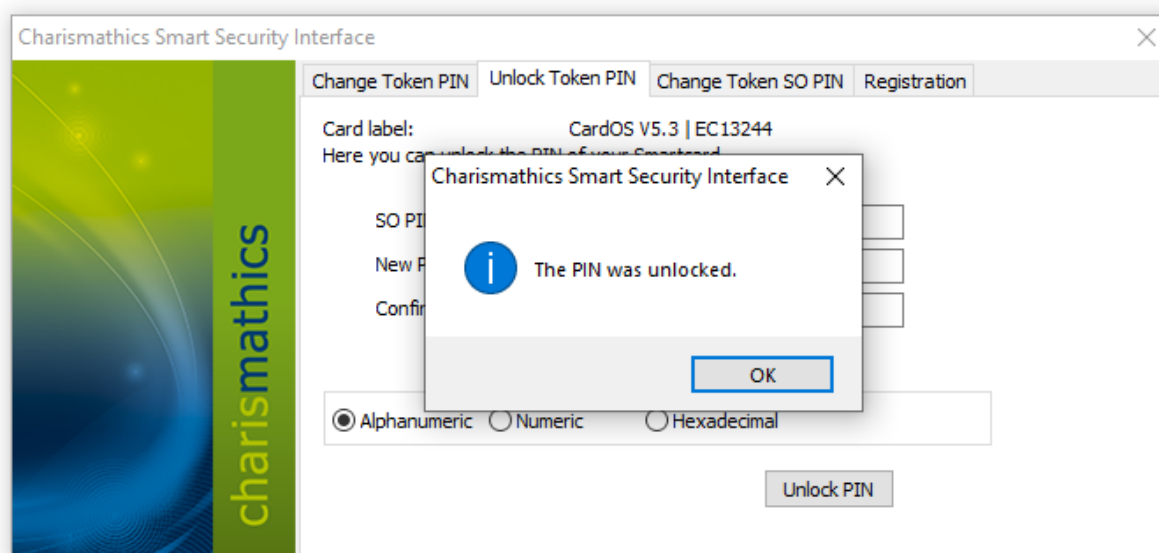
SO PIN:

New PIN:

Confirm the New PIN:

Alphanumeric  Numeric  Hexadecimal

Unlock PIN



Charismathics Smart Security Interface

Change Token PIN | **Unlock Token PIN** | Change Token SO PIN | Registration

Card label: CardOS V5.3 | EC13244  
Here you can unlock the PIN of your Smartcard.

SO PIN:

New PIN:

Confirm the New PIN:

Alphanumeric  Numeric  Hexadecimal

Unlock PIN

Charismathics Smart Security Interface

The PIN was unlocked.

OK

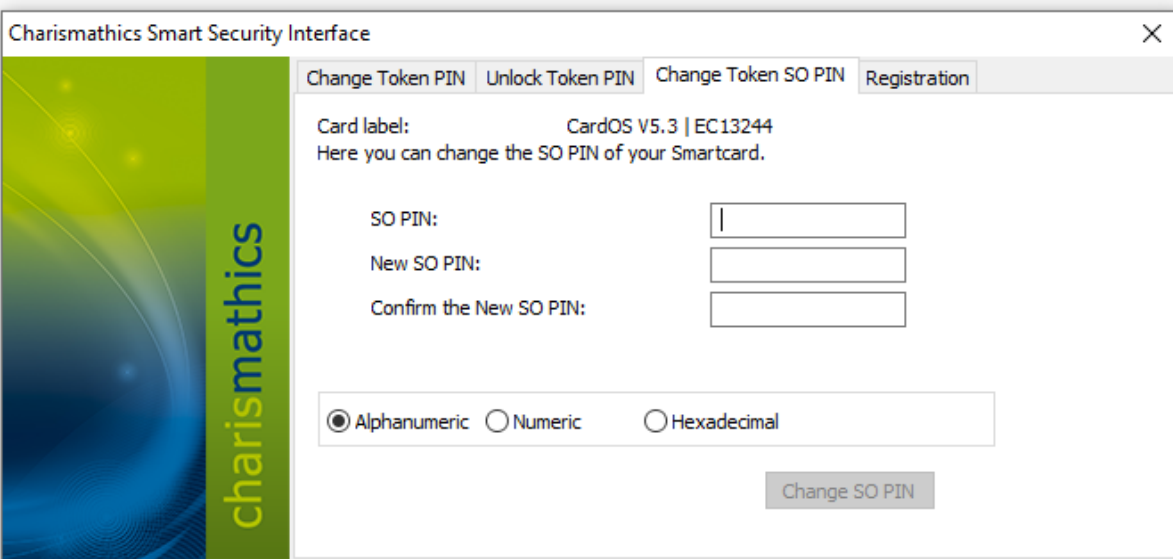
## 6. Change SO PIN

To change the SO PIN, select „Change Token SO PIN, enter the SO PIN followed by the new SO PIN, which must be entered a second time as confirmation.

Click on the button "Change SO PIN" and a confirmation window opens.

The minimum and maximum length of the SO PIN depends on the card OS. SO PIN may consist of any characters (digits, letters, symbols).

**CAUTION!** After three consecutive wrong inputs, the SO PIN will be locked. This means that the smart card is irreversibly blocked and you should request for a new certificate.



Charismathics Smart Security Interface

Change Token PIN | Unlock Token PIN | **Change Token SO PIN** | Registration

Card label: CardOS V5.3 | EC13244  
Here you can change the SO PIN of your Smartcard.

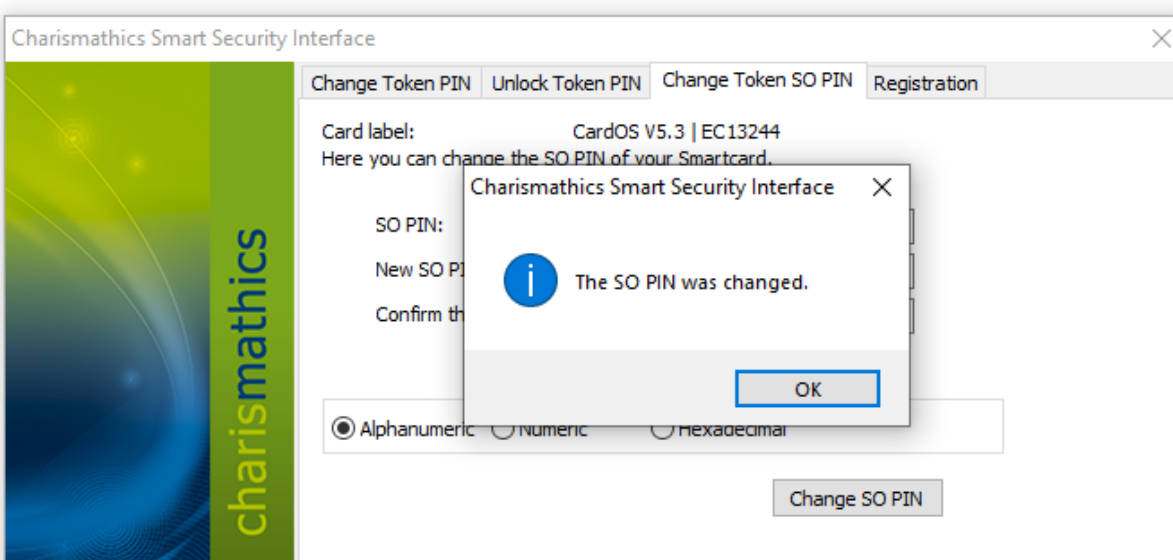
SO PIN:

New SO PIN:

Confirm the New SO PIN:

Alphanumeric  Numeric  Hexadecimal

Change SO PIN



Charismathics Smart Security Interface

Change Token PIN | Unlock Token PIN | **Change Token SO PIN** | Registration

Card label: CardOS V5.3 | EC13244  
Here you can change the SO PIN of your Smartcard.

SO PIN:

New SO PIN:

Confirm the

Alphanumeric  Numeric  Hexadecimal

Change SO PIN

Charismathics Smart Security Interface

**i** The SO PIN was changed.

OK

## 7. Important information

**CAUTION!** While using Charismathics Smart Security Interface you can connect only one smart card to your computer. Connecting more than one may result in blocking one of them. EuroCert shall not be liable for the consequences of non-compliance of a user with this recommendation.

If you have a technical enquiry, please contact our technical support:  
<https://eurocert.pl/index.php/en-us/contact>.