

Cryptographic card management application user manual - Windows



Table of contents

1.	Cryptographic Card Managenemt Appilcation download and installation	3
2.	Application after installation	5
2.1	Certificate registration in the Windows certificate store	5
2.2	Change token PIN	6
2.3	Unlock token PIN	7
2.4	Change token SO PIN	8
3.	Other	8



1. Cryptographic Card Management Application download and installation

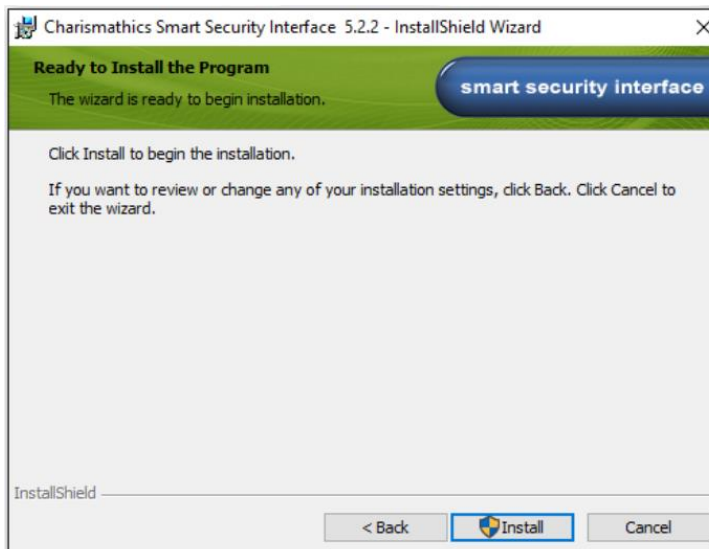
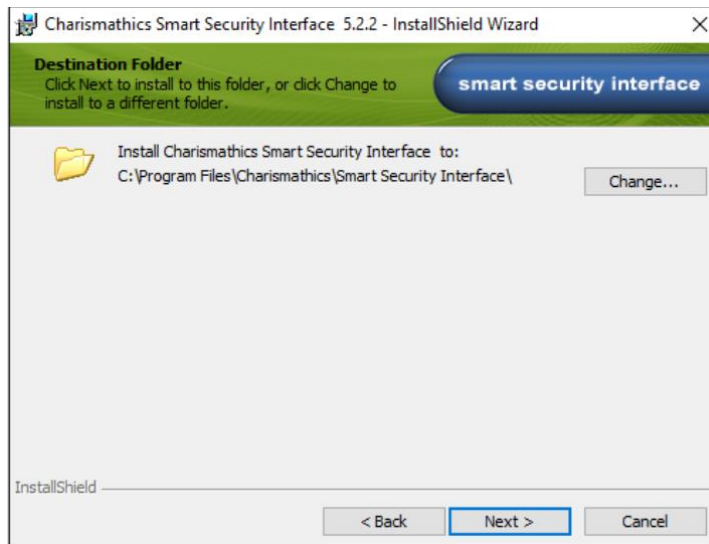
To download Cryptographic Card Management Application go through the following link: <https://eurocert.pl/en/oprogramowanie/> and then click on “DOWNLOAD” button next to the application.

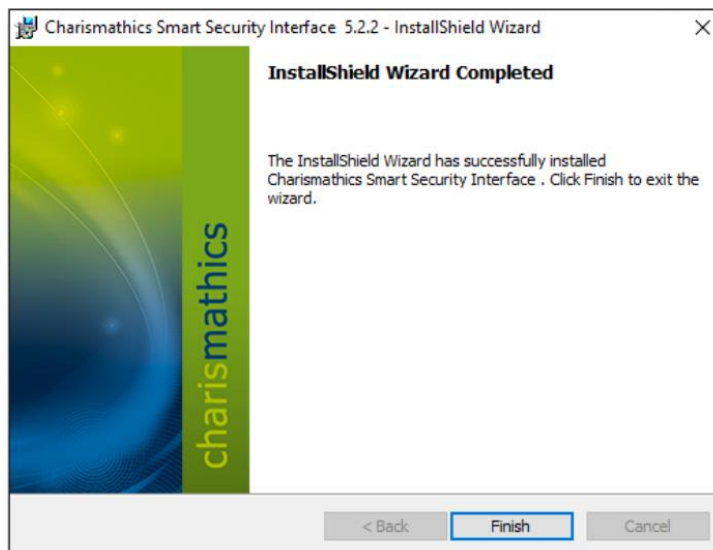
The Cryptographic Card Management Application installer file also includes root certificates which are being installed alongside the application.



To install the CSSI application, administrator privileges are required. After downloading the installer file, download and run the installer and go through the installation process according to the following screenshots.





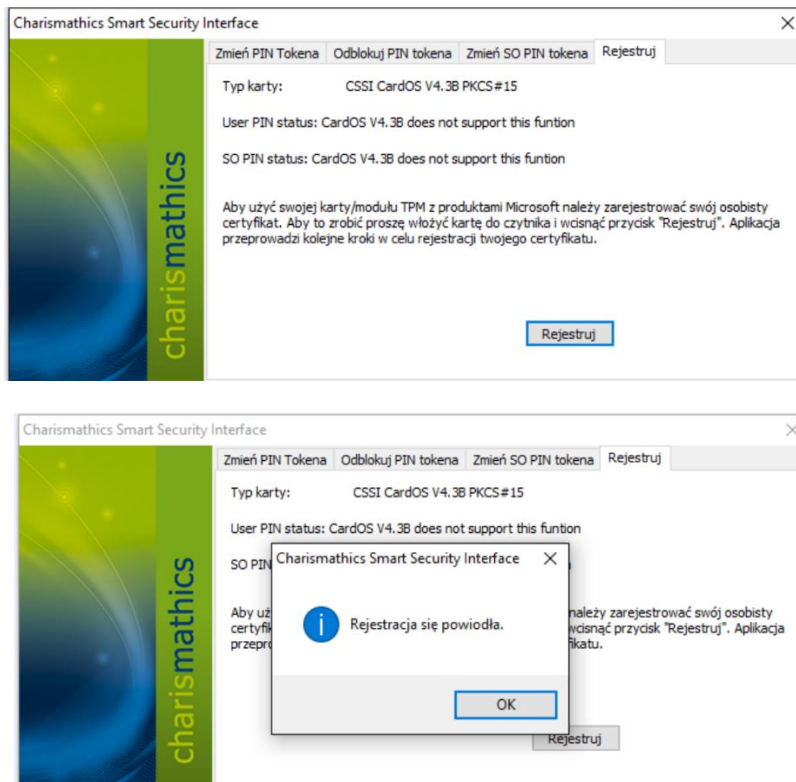


After installing Charismathics Smart Security Interface, the system restart is required.

2. Application after installation

2.1 Certificate registration in the Windows certificate store

After connecting the token to the computer open the Smart Security Interface application, after which go to the “Register” tab in the top right corner. In the opened tab click on the “Register” button. This action is performed only once for a given cryptographic card on a given computer.



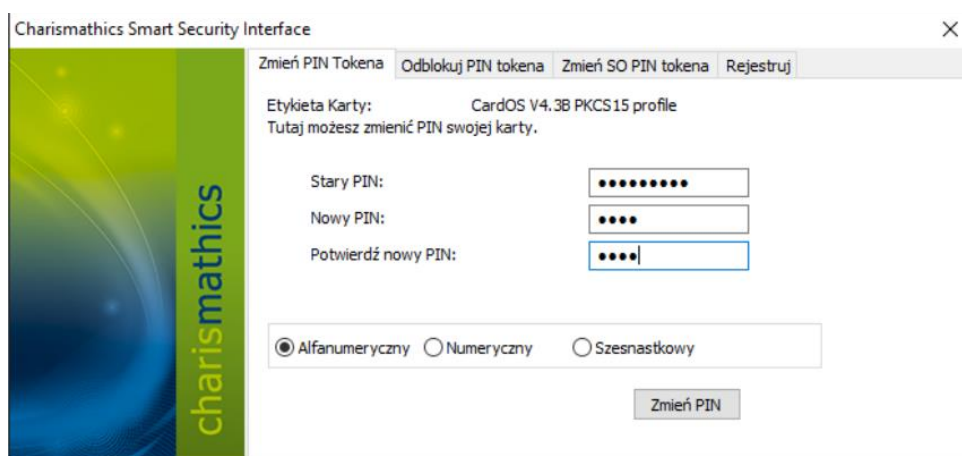
After the certificate has been correctly registered, the popup window with „Registration successful” text will appear.

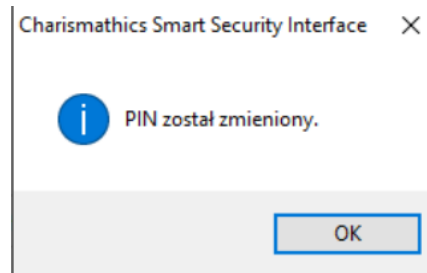
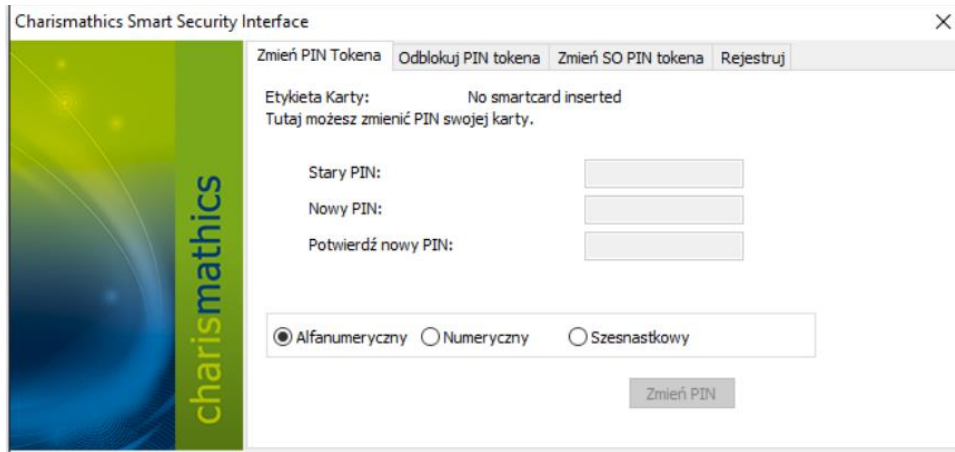
2.2 Change token PIN

To change the PIN code, open the Smart Security Interface application and in the “Change token PIN” tab in the “Old PIN” field provide the current PIN code, after which in the “New PIN” and “Confirm new PIN” provide a new PIN.

The minimum PIN length is 4 characters and the maximum length is 10 characters. A new PIN can consist of any characters: numbers, letters (lowercase, uppercase), symbols and other.

WARNING! If the PIN was entered incorrectly three times, it will get locked. In order to unlock the PIN code, follow the instructions in the “Unlock token PIN” section.



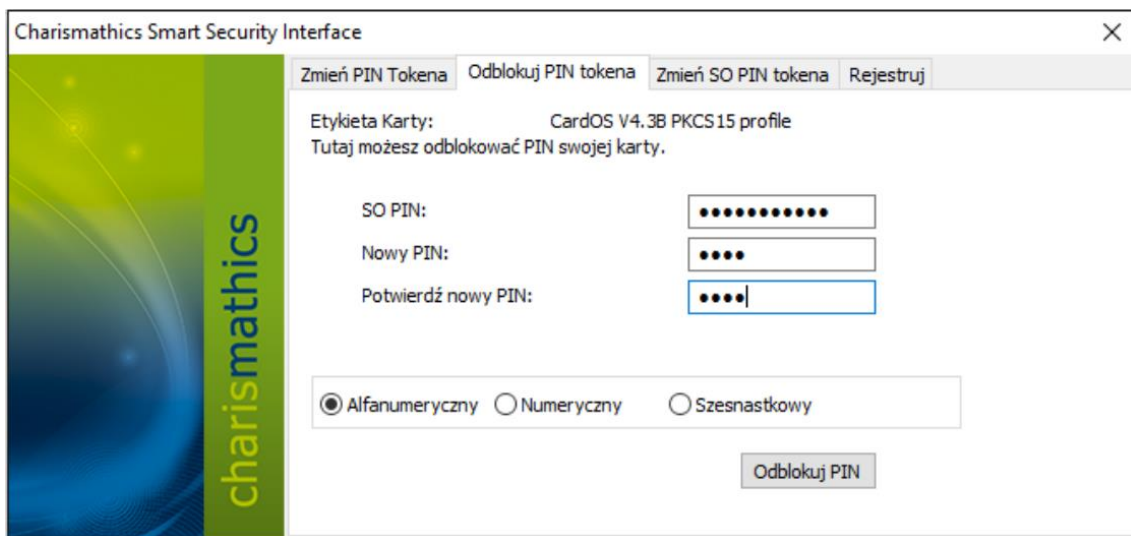


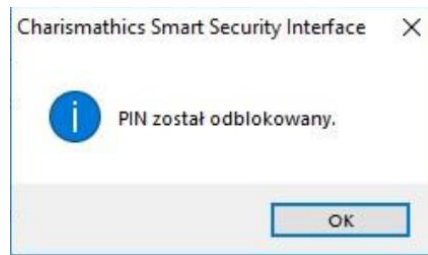
2.3 Unlock token PIN

Entering the incorrect PIN code three times will lock it.

To unlock the PIN code, open the Smart Security Interface application and in the “Change token PIN” tab in the “Old PIN” field provide the current PIN code, after which in the “New PIN” and “Confirm new PIN” provide a new PIN.

WARNING! If incorrect SO PIN was entered three times, the cryptographic card will be irreversibly locked. In such a case, a new cryptographic card with a new certificate will have to be purchased.





2.4 Change token SO PIN

To change the SO PIN code, open the Smart Security Interface application and in the “Change token SO PIN” in the “Old SO PIN” field provide the current SO PIN code, and in the “New SO PIN” and “Confirm new SO PIN” provide a new SO PIN.

The minimum SO PIN length is 4 characters and the maximum length is 10 characters. A new SO PIN can consist of any characters: numbers, letters (lowercase, uppercase), symbols and other.

WARNING! If incorrect SO PIN was entered three times, the cryptographic card will be irreversibly locked. In such a case, a new cryptographic card with a new certificate will have to be purchased.

3. Other

WARNING! When using the „Smart Security Interface” application, only one cryptographic card can be connected to the computer. Connecting more than one may result in blocking some of them. EuroCert is not responsible for the consequences of failure to comply with this recommendation.

In case of any issues with the application please do not hesitate to contact us via email or through the phone: +48 22 390 59 95

